



BK BIRLA CENTRE FOR EDUCATION
SARALA BIRLA GROUP OF SCHOOLS
SENIOR SECONDARY CO-ED DAY CUM BOYS' RESIDENTIAL SCHOOL
MID TERM EXAMINATION 2024-25
ARTIFICIAL INTELLIGENCE



Class: VI
Date: 26.09.2024
Name:

Duration: 2 hrs.
Max Marks: 50
Exam No. :

General Instructions:

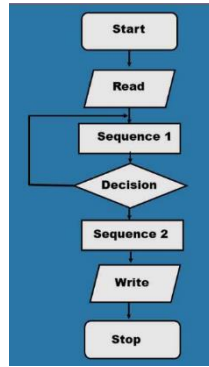
1. Please read the instructions carefully.
2. This Question Paper consists of 18 questions in two sections: Section A & Section B.
3. Section A has Objective type questions (MCQ, Fill in the blanks, Match the following) whereas Section B contains Subjective type questions.
4. All questions of a particular section must be attempted in the correct order.
5. **SECTION A - OBJECTIVE TYPE QUESTIONS (24 MARKS):**
 - i. This section has 03 questions.
 - ii. Marks allotted are mentioned against each question/part.
 - iii. There is no negative marking.
 - iv. Do as per the instructions given.
6. **SECTION B – SUBJECTIVE TYPE QUESTIONS (26 MARKS):**
 - i. This section has 15 questions.
 - ii. A candidate has to do 11 questions.
 - iii. Do as per the instructions given.
 - iv. Marks allotted are mentioned against each question/part.

SECTION A: OBJECTIVE TYPE QUESTIONS

I. Multiple Choice Questions: (Answer any twelve) (12 X 1 = 12)

- (1) The place where programs and executable instructions are stored is called
(a) Memory (b) Software (c) Control Unit (d) ALU
- (2) is a small, compact, portable device to store large amounts of data.
(a) CDs (b) Blu-ray disc (c) Pen drive (d) Hard disk
- (3) Devices through which the computer shows the output of its computation are known as
(a) Input (b) Output (c) Control (d) Plotter
- (4) A flowchart needs to represent the situation where for each mark a student is awarded “Pass” or “Fail”.... the system will consider the mark and if it's 50 or over award “Pass”, else it awards “Fail”. This is an example of which of the algorithm construct ?
(a) Decision (b) Loop (c) Sequence (d) All of these
- (5) What symbol is used to represent output in a flowchart ?
(a) Circle (b) Square (c) Parallelogram (d) Kite shaped box
- (6) In a flowchart how are symbols connected ?
(a) Symbols do not get connected together in a flowchart
(b) With lines and an arrow to show the direction of flow
(c) With dashed lines and numbers
(d) With solid lines to link events

(7)



- (a) This is a flowchart
- (b) This is an algorithm
- (c) This is a pseudocode
- (d) This is a decision chart

(8) Which of the following is NOT related to intelligence ?

- (a) It lets us to solve problems, understand concepts and act purposefully
- (b) It allows us to imagine and use our experience in life to solve problems
- (c) It allows us to be creative and create objects and concepts of beauty and originality
- (d) It helps us to act violently and wage wars

(9) Due to which of these abilities has human beings emerged as the dominant species on earth ?

- (a) Great strength
- (b) Great speed
- (c) Great size
- (d) High intelligence

(10) Which of the following activities involves the use of AI Technology ?

- (a) Sorting of emails into folders based on content
- (b) Booting up the computer
- (c) Adding up numbers using a calculator
- (d) Changing coloured photographs into black and white

(11) Which of the following is not a sign of Intelligence ?

- (a) Solve problems
- (b) Creating a poem
- (c) Writing an original story
- (d) Taking bath

(12) Recommended videos shown to users on Netflix, Amazon Prime etc. uses technology.

- (a) Artificial Intelligence
- (b) Augmented Reality
- (c) Virtual Reality
- (d) All of these

(13) Which of the following is not a chatbot ?

- (a) ELIZA
- (b) ALICE
- (c) MITSUKU
- (d) PAC-MAN

(14) is your on the go encyclopaedia.

- (a) Amazon Echo
- (b) Netflix
- (c) Amazon Prime
- (d) Amazon Go

(15) A home equipped with lighting, heating and electronic devices that can be controlled remotely by smartphone or computer is called a

- (a) Smart Home
- (b) Intelligent Home
- (c) Sustainable Home
- (d) Sensor Home

II. Fill in the blanks. (Answer any eight)

(8 X 1 = 8)

(Honda, Amazon Go, Kismet, Sophia, Tag that photo, Shakey, Smart speaker, Cortana, Arthur Samuel, Siri, Netflix)

- (1) developed a checkers playing computer program.
- (2) was known as the first electronic person.
- (3) An artificially intelligent robot called ASIMO was released by.....
- (4) A robot called recognises and simulates emotions with its face.
- (5) uses a natural language user interface to infer, observe, answer and recommend things to its human user on iOS.
- (6) A robot called is known as the first robot citizen.

- (7) A virtual assistant named was released by Microsoft.
- (8) is the world's most popular subscription-based video streaming offered worldwide.
- (9) wizard can help you to organize your photos so you can reconnect with cherished memories quickly.
- (10) Just Walk Out Shopping experience is available at stores.
- (11) listen to sound waves and convert them into words using automatic speech recognition (ASR) using a set of complex artificial intelligence (AI) technologies.

III. Match the following :

(4 X 1 = 4)

COLUMN A	COLUMN B
1. Deep Blue, a chess playing computer was developed by	(a) Siri
2. An autonomous robot vacuum cleaner	(b) Google Home
3. A virtual assistant works on iOS	(c) Microsoft
4. A smart speaker that uses AI to act as a personal assistant	(d) Roomba

SECTION B: SUBJECTIVE TYPE QUESTIONS

IV. Short Answer Type Questions: (Answer any seven)

(7 X 2 = 14)

- (1) Explain the IPO cycle. Draw diagram also.
- (2) Draw block diagram of a computer system. Explain each part of it.
- (3) Explain an algorithm using an example.
- (4) Draw a flowchart to find the average of five given numbers.
- (5) Give any four examples of display of Intelligence in the animal world i.e. apart from humans.
- (6) Define : (a) Human Intelligence (b) Artificial Intelligence
- (7) Define AI Winter.
- (8) Define : (a) Chatbot (b) Smart Speakers
- (9) Write and explain any two features (examples) of the use of Artificial Intelligence in “Smart Homes”.

V. Long Answer Type Questions : (Answer any four)

(4 X 3 = 12)

- (1) Write the use of the following devices :
 (a) Printer (b) Scanner (c) Webcam
- (2) Differentiate between an Algorithm and Flowchart.
- (3) Write and explain any three features of Intelligence.
- (4) Describe the following : (a) Alexa (b) Sophia (c) Cortana
- (5) Explain the technology used in driverless cars.
- (6) Artificial Intelligence is impacting the future of virtually every industry and every human being. Justify.

***** ALL THE BEST *****